



Killion Industries, Inc. heads into the new millennium with energy and enthusiasm spurred on by new and expanded facilities and continued investment in state of the art equipment. Although we have been a leading source for innovative quality store fixtures around the globe for more than 21 years, Y2K brings new opportunities as well as continued partnership with top retailers around the globe. Among our current customers, you will find Albertson's, Target, The Great Atlantic and Pacific Tea Company (A&P), Smith's Food & Drug, Costco, Bi-Lo (Ahold Division), Kroger and Safeway. Exporting products around the world: Mexico, Saudi Arabia, Panama, United Kingdom, Poland, Japan and Canada are several of our current destinations.

To manufacture our current product lines, we operate in 200,000 square feet of company owned production space. These modern facilities include our new, twin building 160,000 square foot production facility and corporate office as well as continued operation of our existing 40,000 square foot facility on La Mirada Drive. Complete CNC production of Killion Checkout, Killion Produce and Bakery Fixtures as well as, Killion Refrigeration flows through our state of the art Poinsettia buildings. Our La Mirada location is dedicated to the final production of Killion Produce and Bakery Fixtures as well as Killion Refrigeration. Eleven loading docks between the three buildings ensure on time shipments to

meet the delivery date requirements of our customers.

At Killion, advanced CAD/CAM software coupled with CNC routers by SHODA & KOMO bring us to the forefront of Computer Integrated Manufacturing (CIM). By utilizing CIM, we have the capability to produce custom fixture designs to your specific requirements. Our modular construction gives you the flexibility of modern designs that are easy to install and maintain. We work with you to accommodate the latest technological advances to create highly functional fixtures reflecting detailed attention to operating efficiency, ergonomic considerations and aesthetic goals.

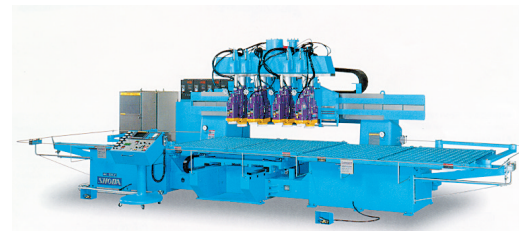
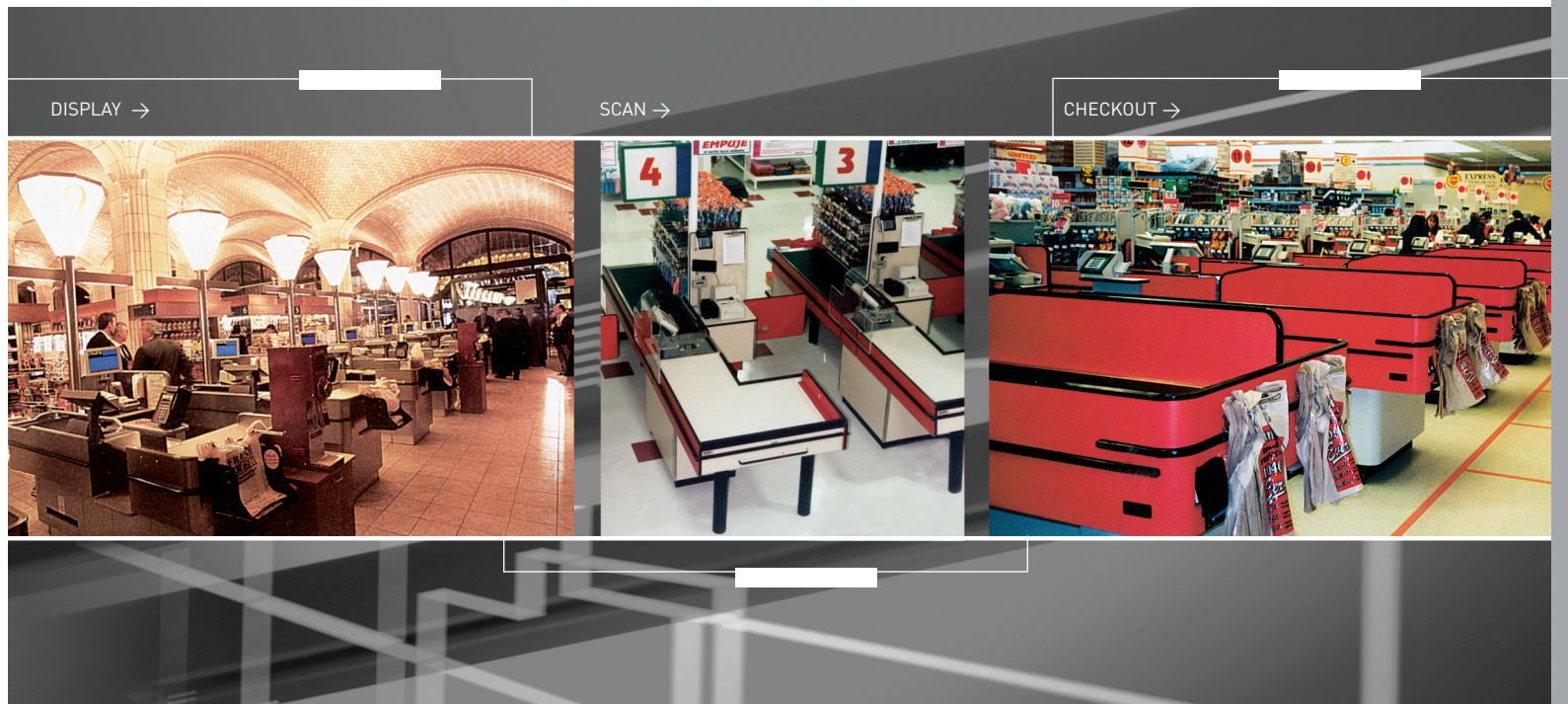
innovative

unique

flexible

customized

FRONT END SOLUTIONS



1380 Poinsettia Avenue • Vista, California 92083-8504

[800] 421-5352 [760] 727-5102 [760] 727-5108 FAX

sales@killionindustries.com

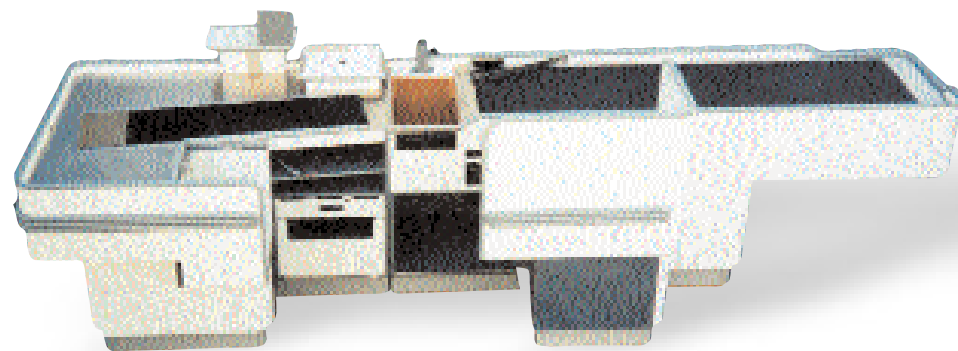
www.killionindustries.com





Front-end solutions by KILLION CHECKOUT give the discriminating buyer the advantage of more than 21 years of checkout innovation. An extensive number of globally known retailers covering all formats have taken advantage of our unique configurations including ELEVATOR, SHRINK KILLER, and H-CONFIGURATION. Efficient and durable, Killion Checkout is flexible and personalized for your particular front-end requirements and décor.

KCu-1500



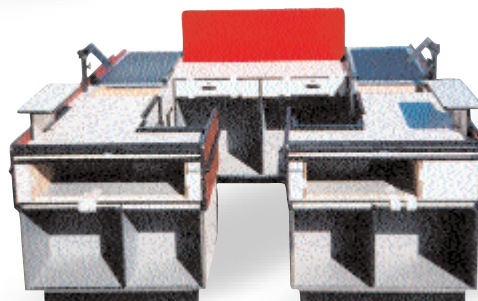
State of the art dual belted KILLION CHECKOUT for moderate to high volume retailers. This checkout system provides high throughput and a sound ergonomic environment.

Available in:

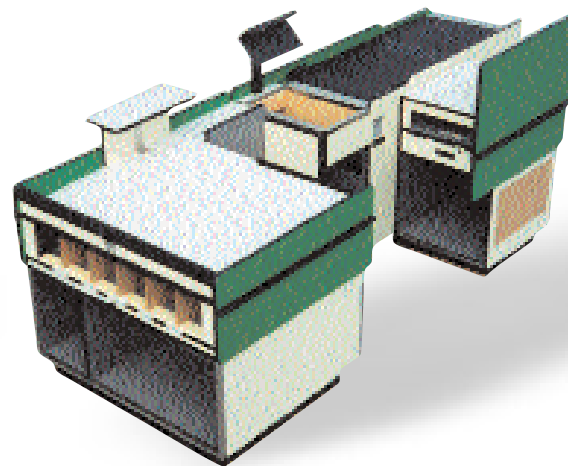
- ▶ STANDARD or MILLENNIUM Construction
- ▶ Front belt length increments of 6"
- ▶ Slide-Back, Elevator, and Scan & Bag Configurations
- ▶ Pedestal, Reverse, and H-Configurations



**KCu 1500 & 3500
SHOWN IN
OPTIONAL "H"
CONFIGURATION
& MILLENNIUM
CONSTRUCTION**



KCu-3500

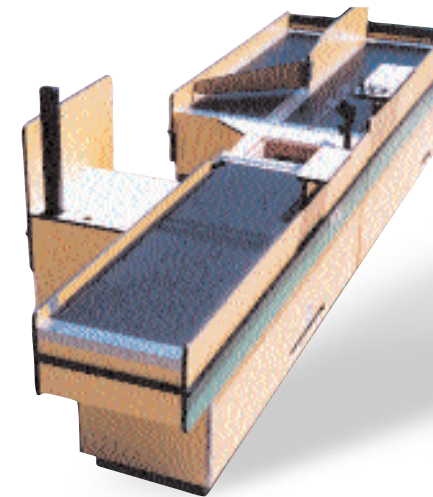


The most versatile KILLION CHECKOUT for all store sizes and formats. Designed with a gravity sloped rear accumulation deck, this system provides bagging flexibility in a sound ergonomic environment.

Available in:

- ▶ STANDARD or MILLENNIUM Construction
- ▶ Front belt length increments of 6"
- ▶ Pedestal, Reverse, Mini, and H-Configurations

KCu-1000

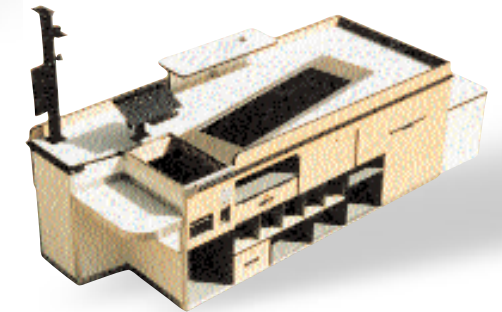


The Tri-Belt KILLION CHECKOUT is an optimum solution for warehouse format retailers. By design, customer participation in the bagging process allows the cashier to divide and process multiple orders.

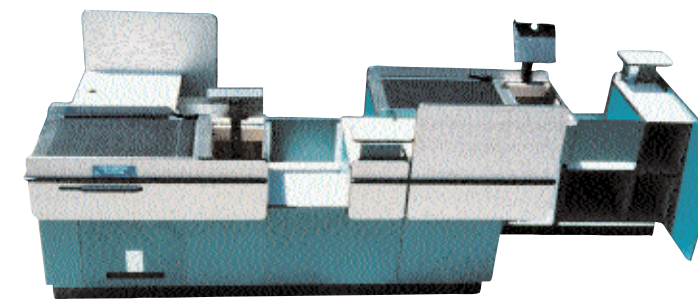
Available in:

- ▶ STANDARD or MILLENNIUM Construction
- ▶ Front and Rear belt increments of 6"
- ▶ Shrink Killer and Reverse

CHECKER UNLOAD STYLES AVAILABLE INCLUDING ERGO-CHECK (PATENT PENDING)



EXPRESS LANE STYLES AVAILABLE



KCu-5000 Mobile Checkout



Killion mobile checkout with MGE ESprit UPS battery system provides 14 hrs of power for portable uses for:

- ▶ Ease of moving about the store in any department (flower, garden, card)
- ▶ Great for in-store special sales or promotions (Valentines day, Mother's Day, Father's Day rushes)
- ▶ Great for Store Openings when an extra cashier is needed for the first 30 days
- ▶ Great for "hot dog" or "espresso" sales in front of store

STANDARD FEATURES

- Powerroll Belt Drive System
- Automated Electric Eye Belt Advancement
- Complete Clean & Dirty Electrical Systems
- Keyboard Pedestal & Display Post
- Scanner Scale Opening
- Checkwriting Counter w/ Acrylic Top
- Locking Coupon or Utility Drawer
- Terminal Stand Cash Shield
- Bag Storage
- Security Mirror
- Stainless Steel and Cart Bumper Protection
- Order Divider Bars, Aisle Closure Coil, Trash Receptacle
- Choice of Standard Laminate Exterior Colors
- Choice of Standard Top Deck Color
- 90 Day Parts & Labor, 2 Year Parts Warranty
- U.L. / C.U.L. Listed

AVAILABLE OPTIONS

- ADA Checkwriting Platform
- EFT/Card Swipe Holders
- Kart Cam
- Custom Exterior Laminate
- Custom Bumper Size & Color